

DIN Connectors




Contents	1
introduction	1
Specifications	2
DIN Connectors(Plugs)	
Model Number System	3
Plugs	4 - 5
DIN Connectors(Sockets)	
In-Line Sockets	6
Horizontal Type	
Dip Type	7 - 12
EMI-Proof Type	13 - 14

Introduction

HOSIDEN DIN connectors are supplied to electronic equipment manufacturers both in Japan and overseas and are very well accepted because of high quality , a variety of models available, and high reliability.

In order to satisfy customer requirements, we contrive to realize mass production of our products. And we provide, besides various plug and sockets (standard : 3 to 8P) , Plug and sockets for antenna and inline and insulating caps. Also, for meeting every possible applications and purposes, various products for printed circuit board and lead wiring, with switches and locking mechanisms and further with quick mounting mechanism on panel, those can be available.

	Plug	Socket
Insulation Resistance	100MΩ min. at 250V DC	100MΩ min. at 250V DC
Dielectric Strength	250V AC for 1 minute	250V AC for 1 minute
Current Capacity	1A 100V AC , 1A 12V DC	—
Contact Resistance	—	30mΩ max.

The shap of pin entrance () of DIN sockets may be different from that of actual product.

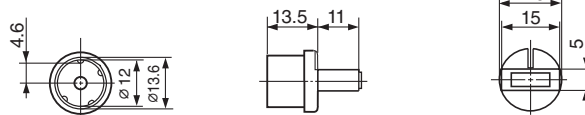
Uses	Audio-video equipment Precision machine Electronic music instrument and so forth.
------	--

Insulating Caps for DIN Connectors

Insulating Caps can be used for dust protection and protection of ICs from damage caused by static electricity from outside of electronic equipment.



TCP9426-01-010



Unit: mm

This is suitable for TCS4000 series and metal cover type sockets

For Example

TCP13□□-715□67

P

D

C

D1	Bush	
	Inside Dia (A)	Length (ℓ)
4	∅ 4.2	16
6	∅ 6.2	21
7	∅ 7.2	21
9	∅ 5.2	16

D	Bush	
	Inside Dia (A)	Length (ℓ)
4	∅ 4.2	16
5	∅ 5.2	16
6	∅ 6.2	21.5(21)
7	∅ 7.2	21.5(21)

(21) is applied to only TCP1300 Series.

C	Color
1	Black
2	Gray #1
3	Gray #2

C1	Color
2	Black
4	Gray #1
6	Gray #2

P	Pin Arrangement	Model No.	
		TCP0500	TCP1300
3	3	○	○
4	4	○	○
5	5a	○	○
2	5b	○	○
1	5c	○	×
6	6	○	○
7	7	○	○
8	8a	○	×
	8b	×	○
9	8a	×	○
	8b	○	×

○... Mass production ×... Consult to our sales person.

For Example

TCP0500-2□

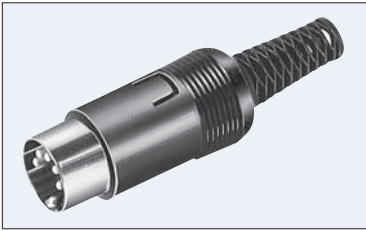
B

B	Cable Diameter
6	∅ 4
8	∅ 4.8
7	∅ 5.5
5	∅ 6
2	∅ 6.7
4	∅ 7

The shape of strain relief is different on each cable diameter.
Please consult to our sales person.

DIN Standard No.	41524	—	41524	—	45327	45322	45329	45326	—
Number of Pins	3	4	5a	5b	5c	6	7	8a	8b
Pin Arrangement									

TCP0500 Series



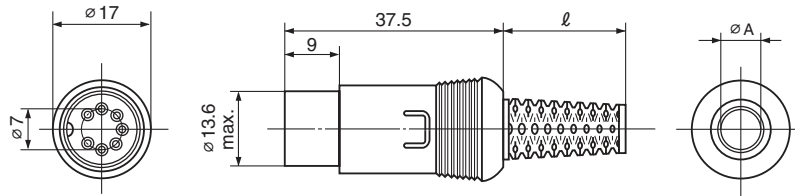
TCP0576-715267

Model No.

TCP05 -715 67
 P D₁ C₁

TCP155 -715 67
 D₁ C₁

*Pin Arrangement "5a" type only



TCP1300 Series

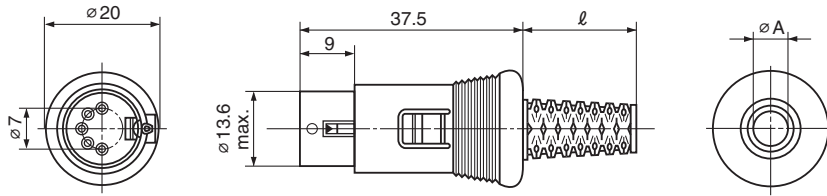
Quick Locking Type



TCP1356-715167

Model No.

TCP13□□-715□67
 P □ D □ C

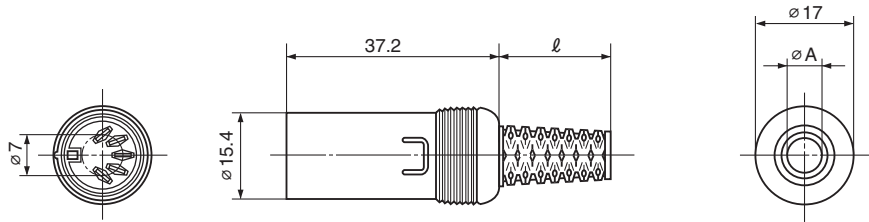


TCS8000 Series

Soldering Connection Type



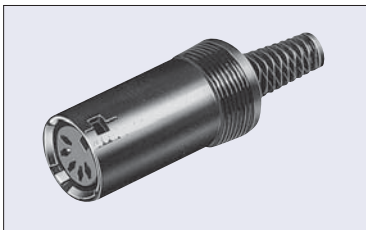
TCS8056-015277



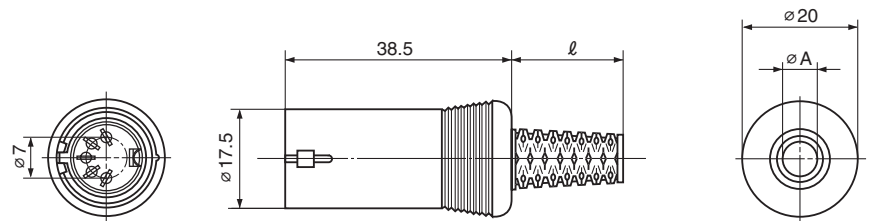
DIN Standard No.	41524	—	41524	—	45327	45322	45329	45326	—			
Number of Pins	3	4	5a	5b	5c	6	7	8a	8b			
Contact Arrangement												
	Length (ℓ)	Inner Dia. (A)	Color									
Model No.	16	4.2	Black	TCS8034-015277	TCS8044-015277	TCS8054-015277	TCS8024-015277	—	TCS8064-015277	TCS8074-015277	TCS8084-015277	TCS8094-015277
			Gray#1	TCS8034-015677	TCS8044-015677	TCS8054-015677	TCS8024-015677	—	TCS8064-015677	TCS8074-015677	TCS8084-015677	TCS8094-015677
			Gray#2	TCS8034-015477	TCS8044-015477	TCS8054-015477	TCS8024-015477	—	TCS8064-015477	TCS8074-015477	TCS8084-015477	TCS8094-015477
	16	5.2	Black	TCS8039-015277	TCS8049-015277	TCS8059-015277	TCS8029-015277	—	TCS8069-015277	TCS8079-015277	TCS8089-015277	TCS8099-015277
			Gray#1	TCS8039-015677	TCS8049-015677	TCS8059-015677	TCS8029-015677	—	TCS8069-015677	TCS8079-015677	TCS8089-015677	TCS8099-015677
			Gray#2	TCS8039-015477	TCS8049-015477	TCS8059-015477	TCS8029-015477	—	TCS8069-015477	TCS8079-015477	TCS8089-015477	TCS8099-015477
	21	6.2	Black	TCS8036-015277	TCS8046-015277	TCS8056-015277	TCS8026-015277	—	TCS8066-015277	TCS8076-015277	TCS8086-015277	TCS8096-015277
			Gray#1	TCS8036-015677	TCS8046-015677	TCS8056-015677	TCS8026-015677	—	TCS8066-015677	TCS8076-015677	TCS8086-015677	TCS8096-015677
			Gray#2	TCS8036-015477	TCS8046-015477	TCS8056-015477	TCS8026-015477	—	TCS8066-015477	TCS8076-015477	TCS8086-015477	TCS8096-015477
	21	7.2	Black	TCS8037-015277	TCS8047-015277	TCS8057-015277	TCS8027-015277	—	TCS8067-015277	TCS8077-015277	TCS8087-015277	TCS8097-015277
			Gray#1	TCS8037-015677	TCS8047-015677	TCS8057-015677	TCS8027-015677	—	TCS8067-015677	TCS8077-015677	TCS8087-015677	TCS8097-015677
			Gray#2	TCS8037-015477	TCS8047-015477	TCS8057-015477	TCS8027-015477	—	TCS8067-015477	TCS8077-015477	TCS8087-015477	TCS8097-015477

TCS8500 Series

Quick Locking Type Soldering Connection Type

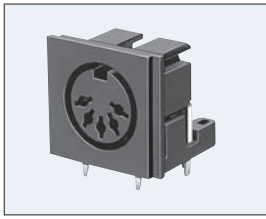


TCS8556-0170277

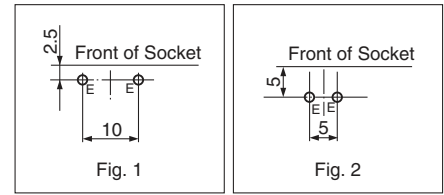
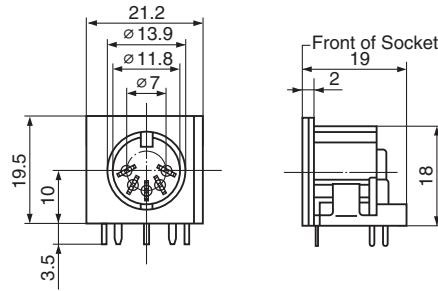


DIN Standard No.	41524	—	41524	—	45327	45322	45329	45326	—			
Number of Pins	3	4	5a	5b	5c	6	7	8a	8b			
Contact Arrangement												
	Length (ℓ)	Inner Dia. (A)	Color									
Model No.	16	4.2	Black	—	—	TCS8554-0170277	—	—	TCS8564-0170277	—	TCS8584-0170277	TCS8594-0170277
			Gray#1	—	—	TCS8554-0170677	—	—	TCS8564-0170677	—	TCS8584-0170677	TCS8594-0170677
			Gray#2	—	—	TCS8554-0170477	—	—	TCS8564-0170477	—	TCS8584-0170477	TCS8594-0170477
	16	5.2	Black	—	—	TCS8559-0170277	—	—	TCS8569-0170277	TCS8579-0170277	TCS8589-0170277	TCS8599-0170277
			Gray#1	—	—	TCS8559-0170677	—	—	TCS8569-0170677	TCS8579-0170677	TCS8589-0170677	TCS8599-0170677
			Gray#2	—	—	TCS8559-0170477	—	—	TCS8569-0170477	TCS8579-0170477	TCS8589-0170477	TCS8599-0170477
	21	6.2	Black	—	—	TCS8556-0170277	—	—	TCS8566-0170277	TCS8576-0170277	TCS8586-0170277	TCS8596-0170277
			Gray#1	—	—	TCS8556-0170677	—	—	TCS8566-0170677	TCS8576-0170677	TCS8586-0170677	TCS8596-0170677
			Gray#2	—	—	TCS8556-0170477	—	—	TCS8566-0170477	TCS8576-0170477	TCS8586-0170477	TCS8596-0170477
	21	7.2	Black	—	—	TCS8557-0170277	—	—	TCS8567-0170277	TCS8577-0170277	TCS8587-0170277	TCS8597-0170277
			Gray#1	—	—	TCS8557-0170677	—	—	TCS8567-0170677	TCS8577-0170677	TCS8587-0170677	TCS8597-0170677
			Gray#2	—	—	TCS8557-0170477	—	—	TCS8567-0170477	TCS8577-0170477	TCS8587-0170477	TCS8597-0170477

TCS4400 Series



TCS4450-0140577

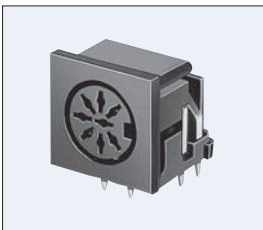


Ground Terminal Position

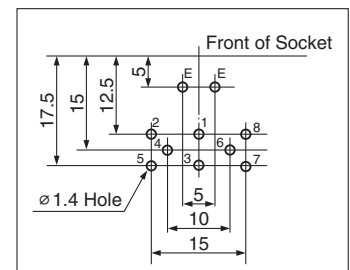
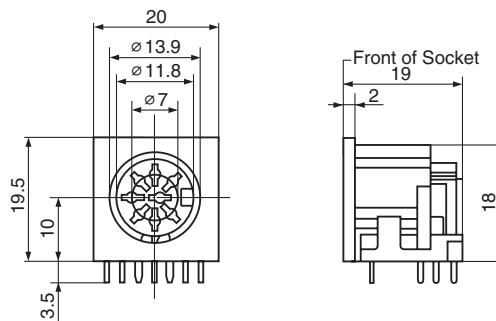
DIN Standard No.	41524	—	41524	—	45327	45322	45329	45326	—	
Number of Contacts	3	4	5a	5b	5c	6	7	8a	8b	
Arrangement										
アース接片の位置 Ground Terminal Position	Fig.1	TCS4430-0140577	TCS4440-0140577	TCS4450-0140577	TCS4420-0140577	—	TCS4460-0140577	TCS4470-0140577	TCS4480-0140577	TCS4490-0140577
	Fig.2	TCS4430-0141577	TCS4440-0141577	TCS4450-0141577	TCS4420-0141577	—	TCS4460-0141577	TCS4470-0141577	TCS4480-0141577	TCS4490-0141577

No. of Poles	3	4	5a	5b
Ground Term. Position Type Fig.1 Hole Layout (Bottom View)				
5c	6	7	8a	8b

TCS5089



TCS5089-1841577

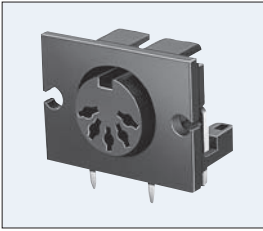
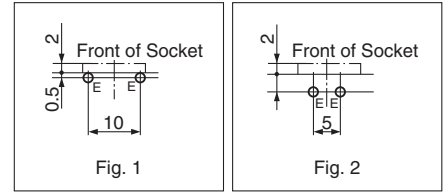
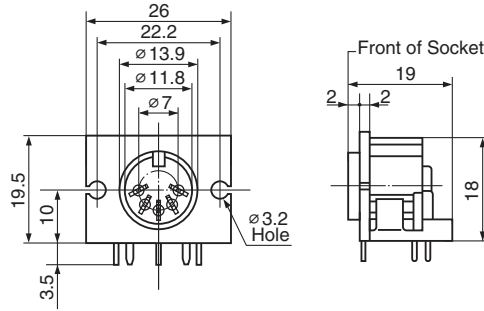


Hole Layout
(Bottom View)

DIN Standard No.	45326
Number of Contacts	8a
Arrangement	
Model No.	TCS5089-1841577

TCS4600 Series

3

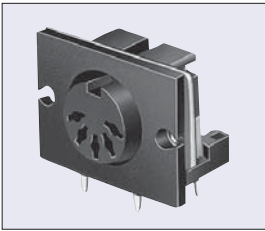
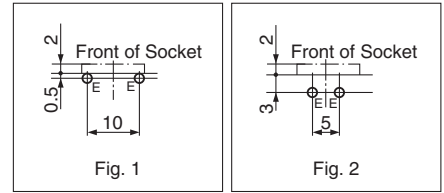
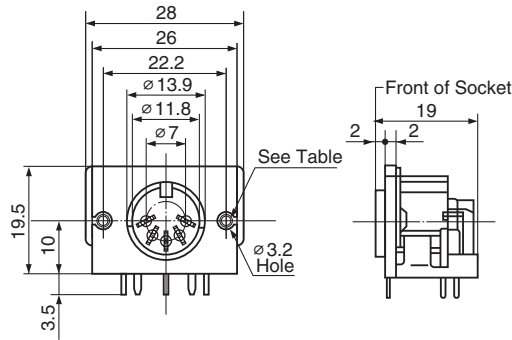

TCS4650-0140577


Ground Terminal Position

DIN Standard No.	41524	—	41524	—	45327	45322	45329	45326	—
Number of Contacts	3	4	5a	5b	5c	6	7	8a	8b
Arrangement									
Ground Terminal Position	Fig.1 Fig.2	— —	TCS4640-0140577 TCS4650-0141577	TCS4650-0140577 TCS4620-0141577	— —	TCS4660-0140577 TCS4660-0141577	TCS4670-0140577 TCS4670-0141577	TCS4680-0140577 TCS4680-0141577	TCS4690-0140577 TCS4690-0141577

No. of Poles	3	4	5a	5b
Ground Term. Position Type Fig.1 Hole Layout (Bottom View)				
5c	6	7	8a	8b

TCS5073


TCS5073-2540577


Ground Terminal Position

DIN Standard No.		41524	—	41524	—	45327	45322	45329	45326	—
Number of Contacts		3	4	5a	5b	5c	6	7	8a	8b
Arrangement										
Mounting Hole	Ground Terminal Position									
M3×0.5	Fig.1	—	TCS5073-2440577	TCS5073-2540577	TCS5073-2240577	—	TCS5073-2640577	TCS5073-2740577	TCS5073-2840577	TCS5073-2940577
	Fig.2	—	TCS5073-2441577	TCS5073-2541577	TCS5073-2241577	TCS5073-2141577	TCS5073-2641577	TCS5073-2741577	TCS5073-2841577	TCS5073-2941577
M2.6×0.45	Fig.1	—	TCS5073-2440677	TCS5073-2540677	TCS5073-2240677	TCS5073-2140677	TCS5073-2640677	TCS5073-2740677	TCS5073-2840677	TCS5073-2940677
	Fig.2	—	TCS5073-2441677	TCS5073-2541677	TCS5073-2241677	TCS5073-2141677	TCS5073-2641677	TCS5073-2741677	TCS5073-2841677	TCS5073-2941677

No. of Poles	3	4	5a	5b
Ground Term. Position Type Fig.1 Hole Layout (Bottom View)				
5c	6	7	8a	8b

TCS5031 Series

Quick Locking Type

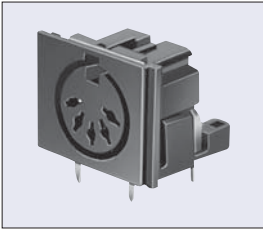
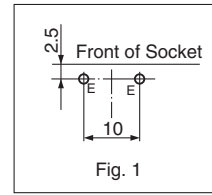
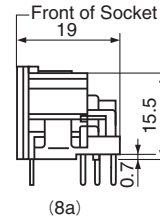
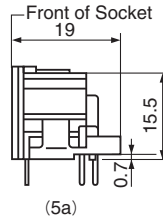
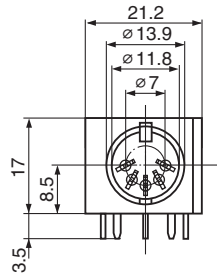

TCS5031-4540577


Fig. 1

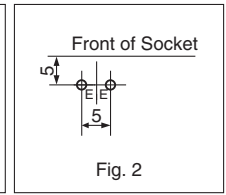
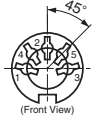
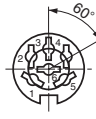
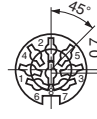
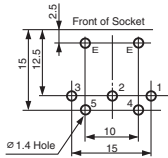
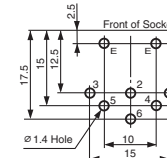
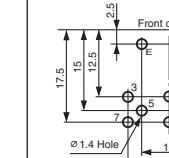





Fig. 2

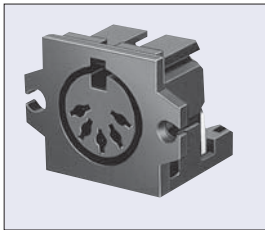
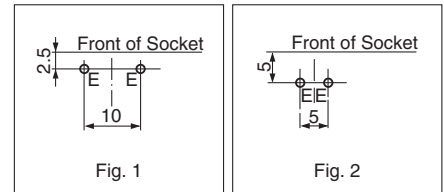
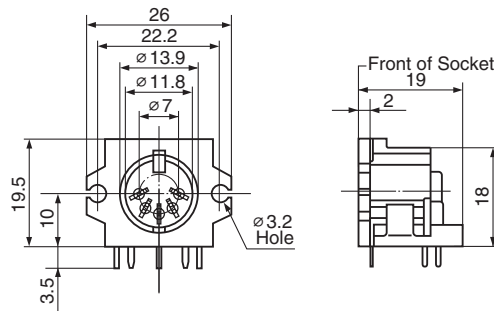
Ground Terminal Position

DIN Standard No.	41524	45326	45326
Number of Contacts	5a	6	8a
Arrangement			
Ground Terminal Position	Fig.1 Fig.2	TCS5031-4640577 TCS5031-4641577	TCS5031-4840577 TCS5031-4841577

No. of Poles	5a	6	8a
Ground Term. Position Type Fig.1			
Hole Layout (Bottom View)			

TCS5300 Series

Quick Locking Type

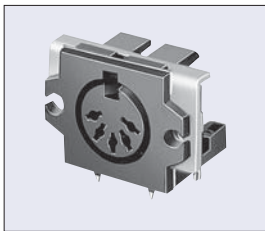
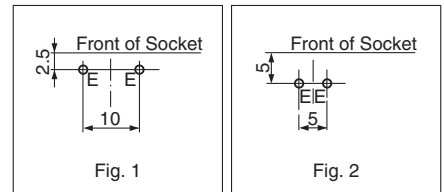
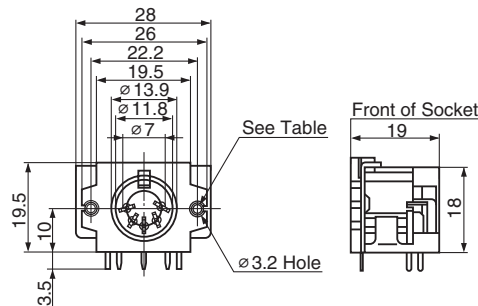

TCS5300-0140577


Ground Terminal Position

DIN Standard No.	41524	—	41524	—	45327	45322	45329	45326	—
Number of Contacts	3	4	5a	5b	5c	6	7	8a	8b
Arrangement									
Ground Terminal Position	Fig.1 Fig.2	—	TCS5350-0140577 TCS5350-0141577	—	—	TCS5360-0140577 TCS5360-0141577	TCS5370-0140577 TCS5370-0141577	TCS5380-0140577 TCS5380-0141577	TCS5390-0140577 TCS5390-0141577

TCS5093 Series

Quick Locking Type


TCS5093-1540577


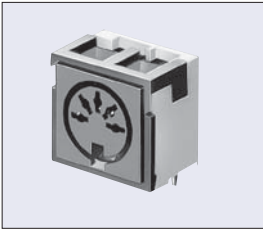
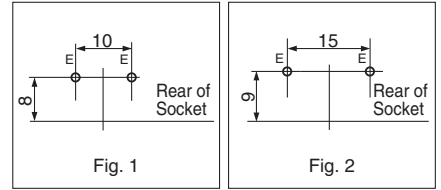
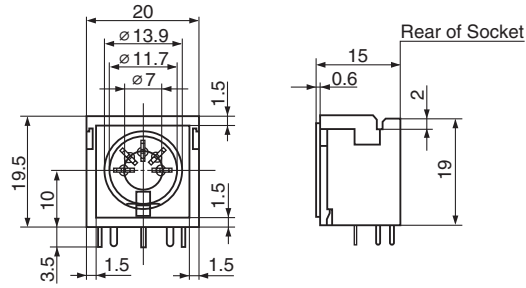
Ground Terminal Position

DIN Standard No.	41524	—	41524	—	45327	45322	45329	45326	—	
Number of Contacts	3	4	5a	5b	5c	6	7	8a	8b	
Arrangement										
Mounting Hole	M3 × 0.5	Fig.1	—	TCS5093-1540577	—	—	TCS5093-1640577	TCS5093-1740577	TCS5093-1840577	TCS5093-1940577
Ground Terminal Position		Fig.2	—	TCS5093-1541577	—	—	TCS5093-1641577	TCS5093-1741577	TCS5093-1841577	TCS5093-1941577
Mounting Hole	M2.6 × 0.45	Fig.1	—	TCS5093-1540677	—	—	TCS5093-1640677	TCS5093-1740677	TCS5093-1840677	TCS5093-1940677
Ground Terminal Position		Fig.2	—	TCS5093-1541677	—	—	TCS5093-1641677	TCS5093-1741677	TCS5093-1841677	TCS5093-1941677

No. of Poles	3	4	5a	5b
Ground Term. Position Type Fig.1 Hole Layout (Bottom View)				
5c			6	

TCS5076 Series

Quick Locking Type


TCS5076-151577


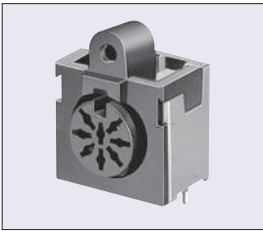
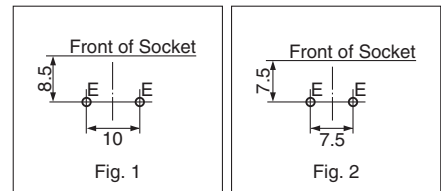
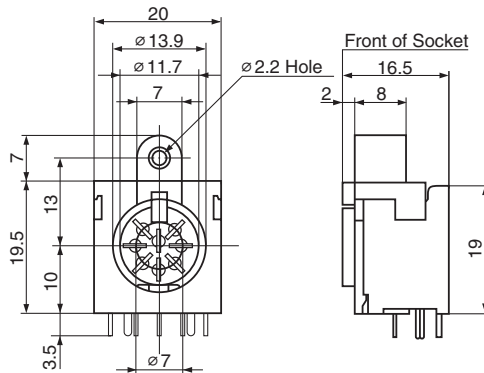
Ground Terminal Position

DIN Standard No.	41524	—	41524	45322	45329	45326	—
Number of Contacts	3	4	5a	6	7	8a	8b
Arrangement							
Ground Terminal Position	Fig.1	—	TCS5076-151577	TCS5076-161577	TCS5076-171577	TCS5076-181577	—
	Fig.2	—	TCS5076-151677	TCS5076-161677	TCS5076-171677	TCS5076-181677	—

No. of Poles	5a	6	7	8a
Ground Term. Position Type Fig.1 Hole Layout (Bottom View)				

TCS5107 Series

Quick Locking Type

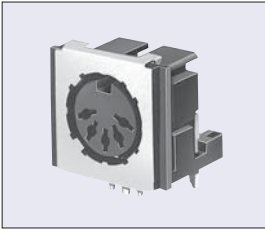

TCS5107-1820177


Ground Terminal Position

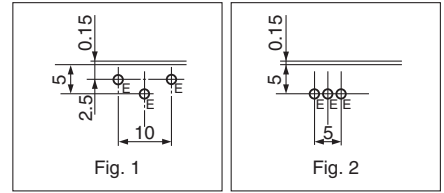
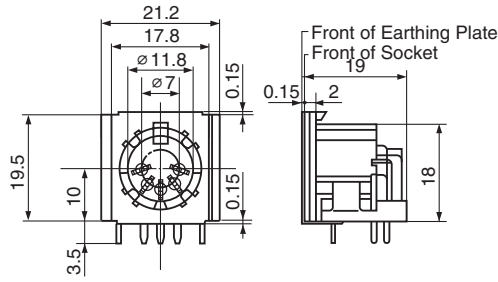
DIN Standard No.	45326	—
Number of Contacts	8a	8b
Arrangement		
Ground Terminal Position	Fig.1	TCS5107-1820177
	Fig.2	TCS5107-1821177

No. of Poles	8a	8b
Ground Term. Position Type Fig.1 Hole Layout (Bottom View)		

TCS5040 Series



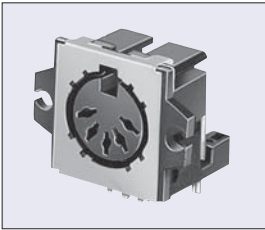
TCS5040-1541577



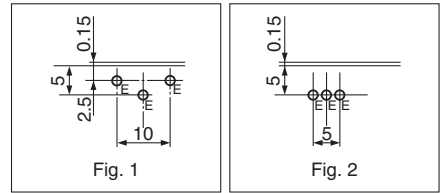
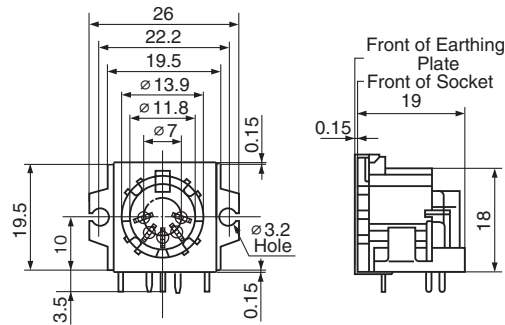
Ground Terminal Position

DIN Standard No.	41524	—	41524	—	45327	45322	45329	45326	—	
Number of Contacts	3	4	5a	5b	5c	6	7	8a	8b	
Arrangement										
Ground Terminal Position	Fig.1	TCS5040-1340577	TCS5040-1440577	TCS5040-1540577	TCS5040-1240577	—	TCS5040-1640577	TCS5040-1740577	TCS5040-1840577	TCS5040-1940577
	Fig.2	TCS5040-1341577	TCS5040-1441577	TCS5040-1541577	TCS5040-1241577	TCS5040-1141577	TCS5040-1641577	TCS5040-1741577	TCS5040-1841577	TCS5040-1941577

TCS5090 Series



TCS5090-1541577

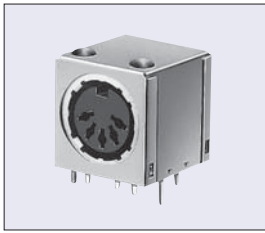


Ground Terminal Position

DIN Standard No.	41524	—	41524	—	45327	45322	45329	45326	—	
Number of Contacts	3	4	5a	5b	5c	6	7	8a	8b	
Arrangement										
Ground Terminal Position	Fig.1	—	—	TCS5090-1540577	—	—	TCS5090-1640577	TCS5090-1740577	TCS5090-1840577	TCS5090-1940577
	Fig.2	—	—	TCS5090-1541577	—	—	TCS5090-1641577	TCS5090-1741577	TCS5090-1841577	TCS5090-1941577

No. of Poles	3	4	5a	5b
Ground Term. Position Type Fig.1 Hole Layout (Bottom View)				
5c	6	7	8a	8b

TCS5074 Series



TCS5074-4540577

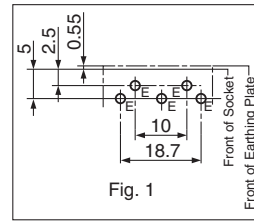
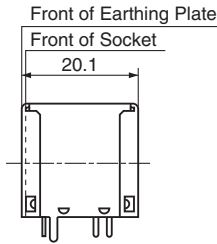
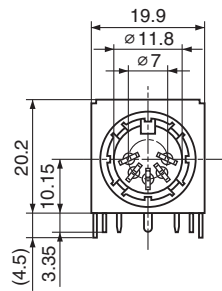


Fig. 1

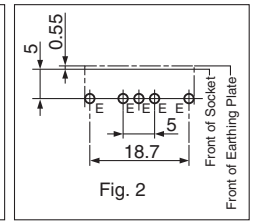
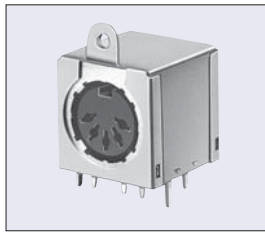


Fig. 2

Ground Terminal Position

DIN Standard No.	41524	—	41524	—	45327	45322	45329	45326	—	
Number of Contacts	3	4	5a	5b	5c	6	7	8a	8b	
Arrangement										
Ground Terminal Position	Fig.1	TCS5074-4340577	TCS5074-4440577	TCS5074-4540577	TCS5074-4240577	—	TCS5074-4640577	TCS5074-4740577	TCS5074-4840577	TCS5074-4940577
	Fig.2	TCS5074-4341577	TCS5074-4441577	TCS5074-4541577	TCS5074-4241577	—	TCS5074-4641577	TCS5074-4741577	TCS5074-4841577	TCS5074-4941577

TCS5084 Series



TCS5084-4540577

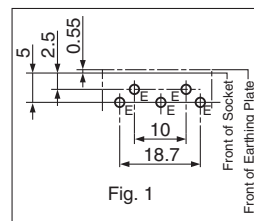
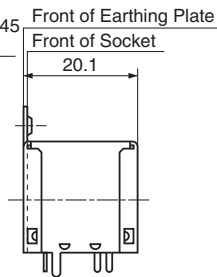
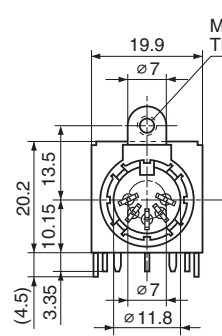


Fig. 1

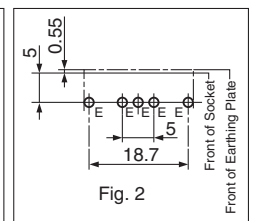


Fig. 2

Ground Terminal Position

DIN Standard No.	41524	—	41524	—	45327	45322	45329	45326	—	
Number of Contacts	3	4	5a	5b	5c	6	7	8a	8b	
Arrangement										
Ground Terminal Position	Fig.1	TCS5084-4340577	TCS5084-4440577	TCS5084-4540577	TCS5084-4240577	—	TCS5084-4640577	TCS5084-4740577	TCS5084-4840577	TCS5084-4940577
	Fig.2	TCS5084-4341577	TCS5084-4441577	TCS5084-4541577	TCS5084-4241577	—	TCS5084-4641577	TCS5084-4741577	TCS5084-4841577	TCS5084-4941577

No. of Poles	3	4	5a	5b
Ground Term. Position Type Fig.1 Hole Layout (Bottom View)				
5c				

Model No. Table

Model No.	Page	TCS5031	10	TCS8036	6	TCS8086	6	TCS8587	6
TCP0500	4	TCS5040	13	TCS8037	6	TCS8087	6	TCS8589	6
TCP1300	5	TCS5073	9	TCS8039	6	TCS8089	6	TCS8594	6
TCP9426	2	TCS5074	14	TCS8044	6	TCS8094	6	TCS8596	6
TCS4420	7	TCS5076	12	TCS8046	6	TCS8096	6	TCS8597	6
TCS4430	7	TCS5084	14	TCS8047	6	TCS8097	6	TCS8599	6
TCS4430	7	TCS5089	7	TCS8049	6	TCS8099	6		
TCS4440	7	TCS5090	13	TCS8054	6	TCS8554	6		
TCS4450	7	TCS5093	11	TCS8056	6	TCS8556	6		
TCS4460	7	TCS5107	12	TCS8057	6	TCS8557	6		
TCS4470	7	TCS5350	11	TCS8059	6	TCS8559	6		
TCS4480	7	TCS5360	11	TCS8064	6	TCS8564	6		
TCS4490	7	TCS5370	11	TCS8066	6	TCS8566	6		
TCS4620	8	TCS5380	11	TCS8067	6	TCS8567	6		
TCS4640	8	TCS5390	11	TCS8069	6	TCS8569	6		
TCS4650	8	TCS8024	6	TCS8074	6	TCS8576	6		
TCS4660	8	TCS8026	6	TCS8076	6	TCS8577	6		
TCS4670	8	TCS8027	6	TCS8077	6	TCS8579	6		
TCS4680	8	TCS8029	6	TCS8079	6	TCS8584	6		
TCS4690	8	TCS8034	6	TCS8084	6	TCS8586	6		



<http://www.hosiden.com>

Head Office

4-33, Kitakyuhoji 1-chome, Yao-city, Osaka 581-0071, Japan
Phone : +81-72-993-1010 Fax : +81-72-994-5101

- Japan Overseas Division :
4-33, Kitakyuhoji 1-chome, Yao-city, Osaka 581-0071, Japan
Phone : +81-72-993-1010 Fax : +81-72-924-8937
- China Hosiden Electronics(Shanghai) Co., Ltd.
Room 10-11, 13th Floor, MAXDO Center, Xing-Yi Road, Chang-Ning District, Shanghai China
Phone : +86-21-5208-1488 Fax : +86-21-5208-1480
Hosiden (Shenzhen) Co., Ltd.
Room 3818, Changping Commercial Building, Honghua Road,
Futian Free Trade Zone, Shenzhen, China
Phone : +86-755-8348-0952 Fax : +86-755-8359-7722
- Hong Kong Hong Kong Hosiden Ltd.
33, Tseuk Luk Street, 6/F-A San Po Kong, Kowloon, Hong Kong
Phone : +852-23238181 Fax : +852-23520425
- Taiwan Taiwan Hosiden Co., Ltd.
10F, No.116, Nanking East Road Sec. 2, Taipei, Taiwan
Phone : +886-2-2571-0017 Fax : +886-2-2561-6413
- Singapore Hosiden Singapore Pte. Ltd.
28, Genting, Lane, #04-06/07, Platinum 28, Singapore 349585
Phone : +65-6296-8100 Fax : +65-6296-8300
- Malaysia Hosiden Corporation(M)Sdn. Bhd.
Lot1, Jalan P/1A, Bangi Industrial Estate 43650
Bander Baru Bangi, Selangor Darul Ehsan, Malaysia
Phone : +60-3-8925-8655 Fax : +60-3-8926-6122
- Thailand Hosiden (Thailand) Co., Ltd.
889 THAI CC TOWER, 21 Floor, Room 212, South Sathorn Road.,
Kwaeng Yannawa, Khet Sathorn, Bangkok 10120, Thailand
Phone : +66-2-673-9760, 9761 Fax : +66-2-673-9762
- Germany Hosiden Europe GmbH
Head Office
Graf-Recke-Straße 82, 40239 Düsseldorf, Germany
Phone : +49-211-96493-0 Fax : +49-211-96493-90
- France Branch office Paris
13, rue Camille Desmoulins 92441 Issy Les Moulineaux, France
Phone : +33-1-5804-2484 Fax : +33-1-5804-2300
- U.K. Hosiden Besson Ltd.
11St. Joseph's Trading Estate St. Joseph's Close, Hove, East Sussex,
BN3 7EZ, United Kingdom
Phone : +44-1273-860000 Fax : +44-1273-777501
- U.S.A. Hosiden America Corp.
Head Office
120 East State Parkway, Schaumburg, IL, 60173, U.S.A.
Phone : +1-847-885-8870 Fax : +1-847-885-0063
San Jose Sales Office
550 South Winchester Boulevard, Suite 320, San Jose, CA 95128, U.S.A.
Phone : +1-408-985-8780 Fax : +1-408-985-8785
Detroit Sales Office
28970 Cabot Drive, Suite 600, Novi, MI 48377, U.S.A.
Phone : +1-248-489-0174 Fax : +1-248-489-1154

- The contents described in this catalog may be changed without prior notice due to products improvements or discontinuance of production.
- Every product in this catalog is compliant to RoHS directive.

CAUTION FOR SAFETY

Please use our products properly based on our
Drawing and Specification.